

**NOBO**  
energy control

## ECOSWITCH SW4

Trådløst bryterpanel  
Wireless switch panel  
Беспроводная панель  
переключателей

Brukerveiledning  
User guide  
Инструкция



**CE**



SAMSVARSKLÆRING (DoC).

Glen Dimplex Nordic AS erklærer herved at utstyret som er beskrevet i denne anvisningen (ECOSWITCH SW4) oppfyller alle vesentlige krav og andre relevante bestemmelser i EU-direktiv 1999/5/EF. Ved behov for kopi av DoC kan forespørsel sendes til: email@glendimplex.no

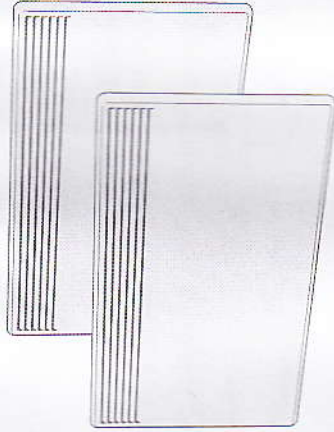
DECLARATION OF CONFORMITY (DoC).

Glen Dimplex Nordic AS declares that the equipment described in this user guide (ECOSWITCH SW4), is in compliance with the essential requirements and other relevant provisions of EU Directive 1999/5/EC (R&TTE). If you require a copy of the original signed DoC, please send an E-mail to: email@glendimplex.no

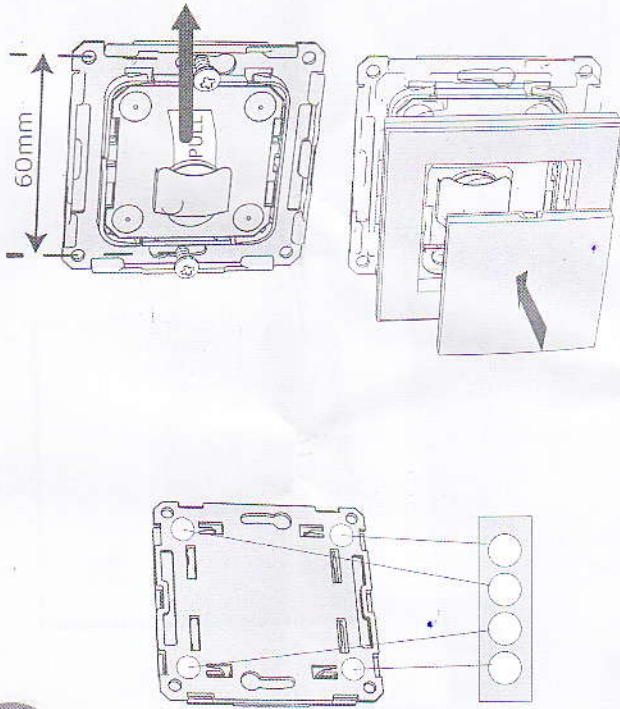


**GlenDimplex**  
NORDIC

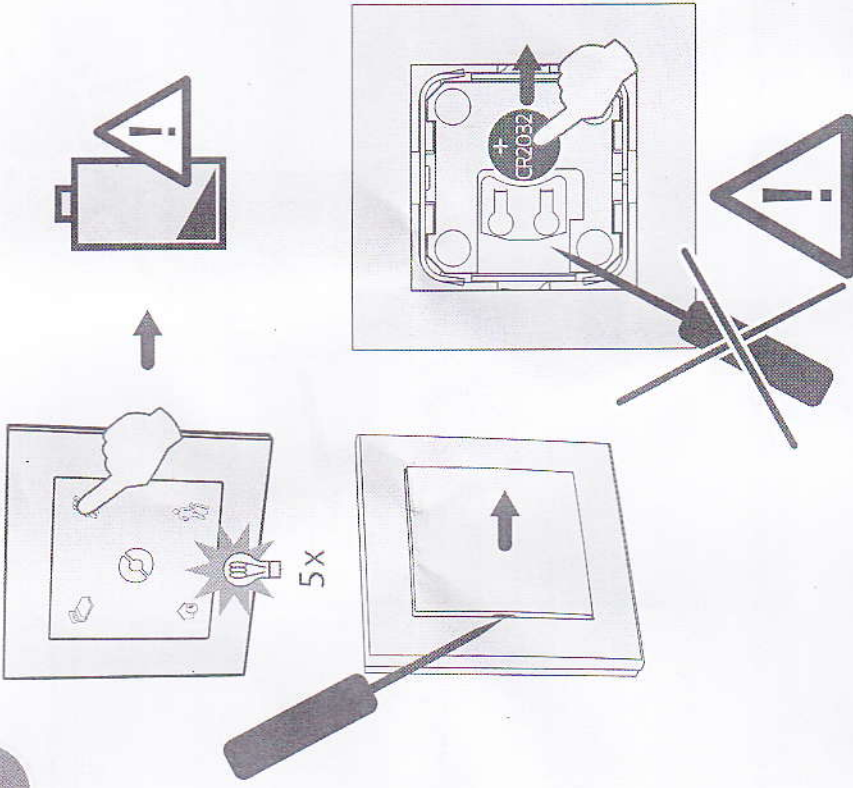
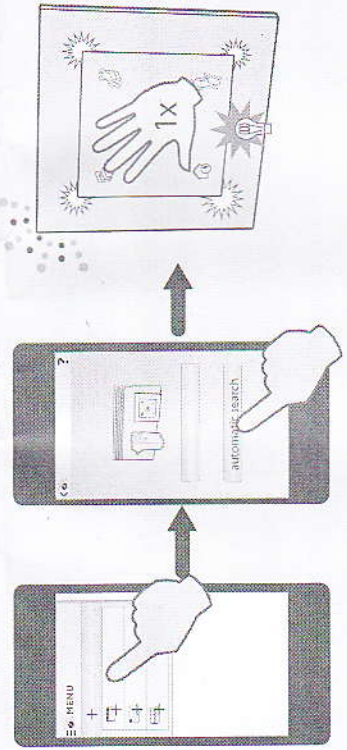
Havnegata 24, Pb16, NO-7500 Stjørdal, NORWAY  
www.glendimplex.no  
email@glendimplex.no



<http://help.nobo.no>

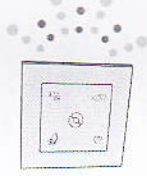


Automatisk søk / Automatic search / Автоматический поиск



CR2032, 3V

RF 868,4 MHz



ID